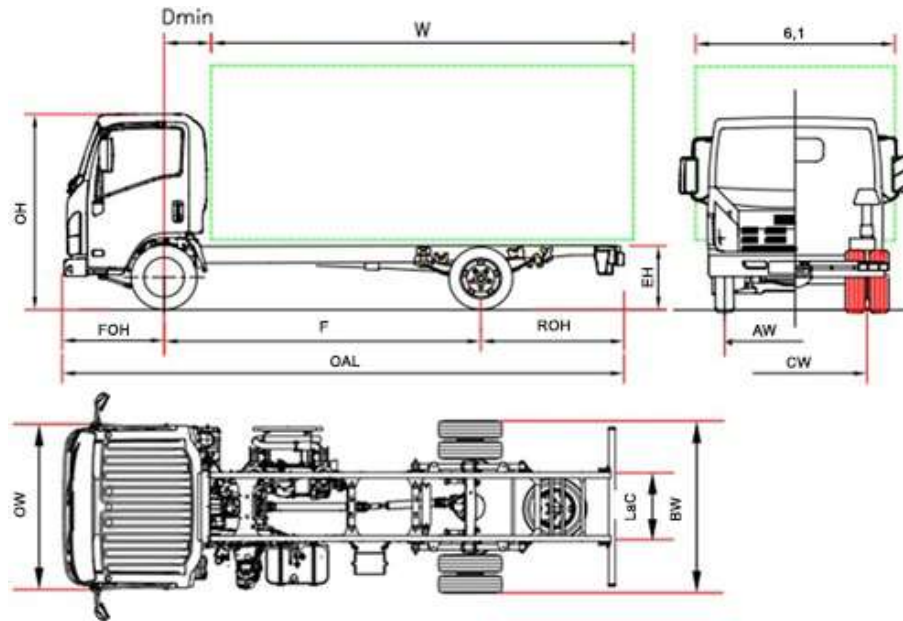


OBD-E



M 55		M55 F	M55 H
Wheelbase	F	2750	3350
Overall length	OAL	5295	6015
Body length min. ⁽¹⁾	W	3595	4415
Body length Max. ⁽¹⁾	W	3885	4500
Rear overhang	ROH	1435	1555
Chassis height	EH	740	735
Overall height	OH	2150	2160
Rear axle width	BW		1865
Cab width ⁽²⁾	OW		1815
Body width ⁽³⁾	6,1		2120
Front axle to back of cab	D min		650 ⁽⁶⁾
Front overhang	FOH		1110
Frame internal size	LaC		700
Front track	AW		1475
Rear track	CW		1425
Minimum Road Clearance	HH		180 ⁽⁷⁾
Turning diameter (m) ⁽⁴⁾	Dia	11,3	13,5
WEIGHT (kg)			
Unladen weight ⁽⁵⁾		2310	2370
Unladen weight front axle		1615/695	1640/730
Gross Vehicle Weight (GVW)		5500	
Front/rear total weight		2100 / 3980	
Max trailer weight braked/ Max trailer weight unbraked		3500 / 750	

1. The length of the body refers to a uniformly loaded vehicle, up to the maximum capacity on each axle (dimensions declared in C.O.C. with no chassis modifications).
2. Excluding turn signal and side mirrors
3. Possible widths with optional mirror brackets 1865/1945 - 1945/2120 - 2120/2240
4. Curb to curb turning diameter
5. The Unladen weight include spare wheel, full fuel tank and driver, optional excluded. NEES II + 35 kg.
6. With minimum counterframe height = 150 mm
7. Clearance point: rear differential

M 55 - Wheelbase (mm) F 2750 - H 3350

April 2024

Equipment	NEES 2
	Right-hand drive (Wheelbase F NEES 2) ^(*)

(*)according to availability

Standard features		
<ul style="list-style-type: none"> EGR - DPD - SCR MID display Engine exhaust brake Side mirrors heated and electric Immobilizer Seat belt buzzer Suspended seat 	<ul style="list-style-type: none"> Fog lamps Fr and Rr Reverse warning buzzer Radio DAB+, USB, Bluetooth Central locking with remote control Front led lights Day-time running lights Cab overturning safety 	<ul style="list-style-type: none"> Steering adjustable (tilting and height) Speed limiter (90km/h) Automatic headlight lighting Head lamps control levelling

Optional	• Air conditioning
-----------------	--------------------

Engine	<p>ISUZU 4JZ1E6N 4 cylinders.</p> <p>16 v with exhaust variable valve timing and gearing cascade distribution. DENSO i-Art Common rail injection system with VGS turbo (electronic control) and intercooler.</p> <p>DISPLACEMENT 2999 cm³</p> <p>POWER 110kW (150 hp) 2800 rpm</p> <p>TORQUE 375 Nm 1280 - 2800 rpm</p> <p>EMISSIONS REGULATIONS EURO VI OBD -E.</p>
---------------	--

Safety systems	<p>ABS</p> <p>ESC (Electronic Stability Control) with ASR</p> <p>LDWS</p> <p>AEBS (pedestrian recognition)</p> <p>SRS Driver Airbag</p>
-----------------------	--

Tank	68 L Wheelbase F - 93 L Wheelbase H	10 L Wheelbase F - 14 L Wheelbase H Ad-Blue®
-------------	---	--

Gearbox and Final drive ratio	6 gear MYY6Z - 5.979 - 3.434 - 2.040 - 1.379 - 1.000 - 0.708; Reverse 5.701; Final gear ratio 4.300 (43/10)
--------------------------------------	---

Transmission control	Manual	NEES 2
-----------------------------	---------------	--------

Dimensions of the chassis	Width 65 mm, Height 180 mm, Thickness 4 mm
----------------------------------	--

Number of seats	3
------------------------	---

Axle	2 the rear one with twin wheels.
-------------	-------------------------------------

Tires	Front 205/75 R16C simple. Rear 205/75 R16C dual.
--------------	---

Brakes	Front and rear: ventilated discs with asbestos-free linings. Hydraulic system, with vacuum brake booster EEC standards with ABS, independent circuits on both axles. Drum parking brake on the transmission shaft.
---------------	--

Suspensions	Front and rear: Multi semi elliptical alloy steel leaf spring. Hydraulic double acting shock absorbers.
--------------------	---

Electric system	Nominal voltage 24V - Generator 90A - 2 x Battery 70Ah
------------------------	--

PROVISIONAL VERSION: All data must be confirmed by the type approval certificate.